

March 10, 2020

Mr. Tom Biamonte
Shelby Crushed Stone
10830 Blair Rd
Medina, New York 14103

Re: NOIA Responses – Item 3
Shelby Crushed Stone - Medina Mine Expansion

Dear Tom:

This letter addresses comment #3 by Mr. Robert Call (NYSDEC) in the February 14, 2020 Notice of Incomplete Application (NOIA) for the referenced site (Mine ID #80346). The comment is provided below, along with our response.

NYSDEC Comment 3: Please provide a future monitoring plan for the wetland, including but not limited to piezometers, wells and staff gauges. The monitoring plan should include a full sized map with all monitoring locations clearly depicted.

The future monitoring plan for the wetland consists of water-level monitoring at existing and new locations in the wetland. Well points PZ-1 and PZ-2, and staff gauge SG-1, will be added to the existing monitoring required by Special Condition #12 of the Mining Permit. The attached figure shows the locations of these monitoring points. PZ-1 is located north of the primary ditch and PZ-2 is located south of the primary ditch. Both well points allow for monitoring of the shallow, semi-perched, seasonal water table. SG-1 is located within the primary ditch and monitors the surface water level in the ditch.

A monitoring well pair will be installed south of the primary ditch in a track-rig accessible area of the wetland at a location preferably near PZ-2. One of the wells will be screened in the unconsolidated material above bedrock (MW-7S), but beneath the lacustrine silt and clay layer. The other well (MW-7) should be completed in bedrock through the Gasport Member and into the Decew Member, with the overburden cased and sealed off with cement. The addition of this monitoring well pair will allow monitoring of the surface water (SG-1); the shallow, perched

March 10, 2020

Page 2

system above the silty clay (PZ-1 and PZ-2); the unconsolidated material above bedrock (MW-7S) and the bedrock aquifer (MW-7).

This monitoring plan will allow for observation of water-level impacts that may occur in the future as the mine advances into the 8.7 acres of wetland. Water level measurements at these locations will continue at the monthly frequency already required by Special Condition #12. Monitoring of PZ-1 will cease once mining has advanced to its location.

Let me know if you have any questions regarding this monitoring plan.

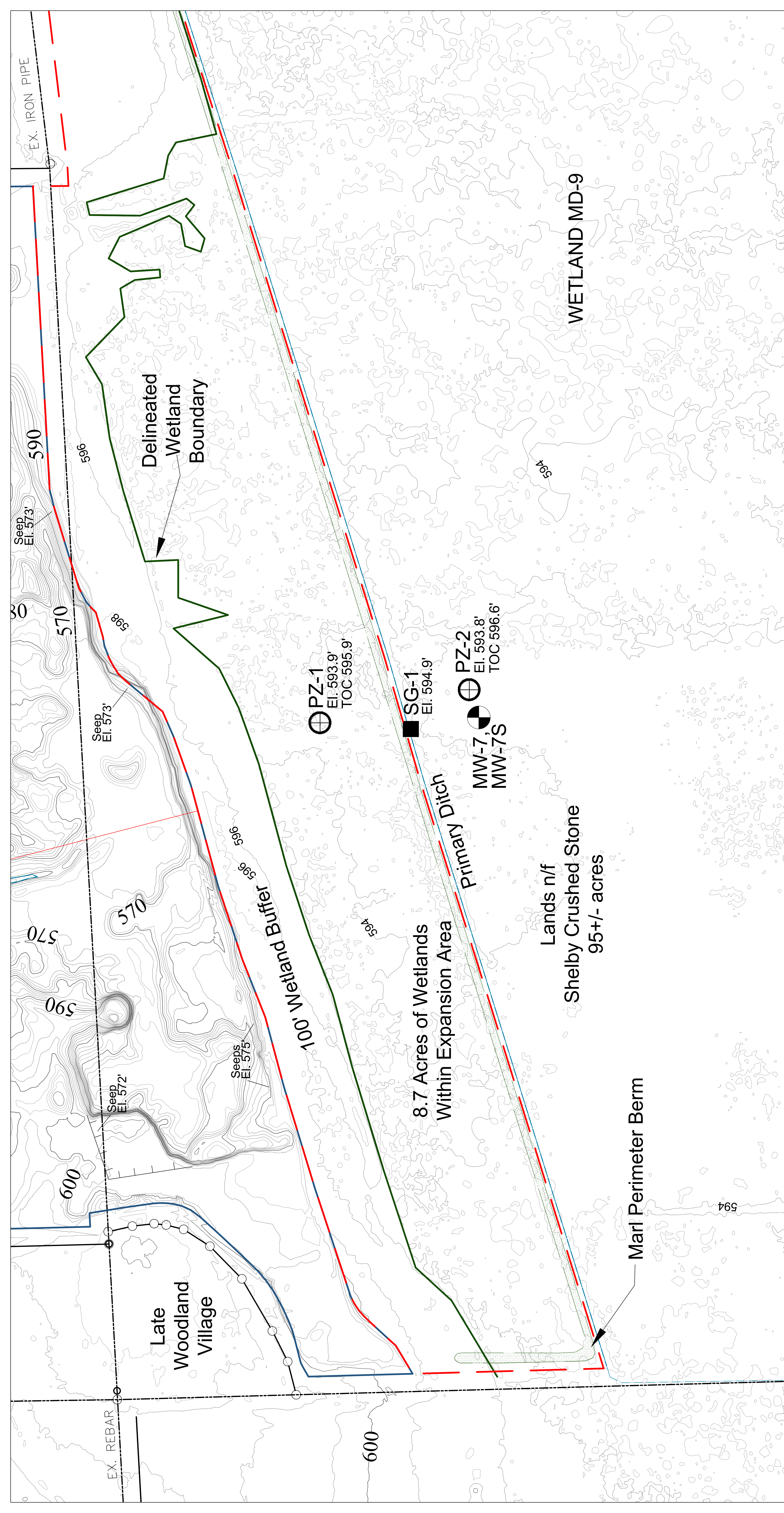
Sincerely,



Steven M. Trader, PG, CPG

Alpha Geoscience

Z:\projects\2019\19100-19120\19120 - Medina Mine\5_0 Reports\NOIA\NOIA Comment #3 - Alpha Response.docx



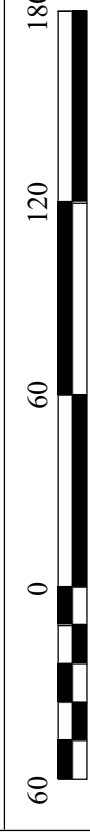
LEGEND

- Property Line
- 10' Contour Line
- 2' Contour Line
- Current Life of Mine
- Proposed Expansion Area
- Water
- Proposed Marl Perimeter Berm
- Piezometer with Surface Elevation
- Proposed Well Pair

NOTES

1. Mining Plan Map prepared by Griggs-Lang Consulting Geologists, last updated June 9, 2014, and modified by Strategic Mining Solutions in 2018 and 2019.
2. Extended elevation contours (2-foot) derived from LIDAR dataset provided through NYSGIS Clearinghouse.
3. Topographic survey of delineated wetland area performed by Strategic Mining Solutions on August 16, 2019.

SCALE



DETAILS

Topographic Survey Date: August 16, 2019
 Horizontal Scale: 1" = 60'
 Datum: Mean Sea Level
 USGS Quad: Medina 7.5'
 Contour Interval: 2 feet



FUTURE MONITORING PLAN FOR WETLAND MD-9

Shelby Crushed Stone
 Medina Mine
 Town of Medina, Orleans County, New York
 Project #19120